

Welcome to Fairfield Methodist School (Secondary)

Principal's Sharing



OUTLINE

- About FMS(S)
- School Routines & Highlights
- PLD Matters
- CCA Matters
- Student Management & Student Well-Being
- Partnership with Parents & Stakeholders
- Parenting Talks
- Concluding Thoughts



MISSION – OUR PURPOSE

To provide a holistic education in a Christian environment to nurture leaders of good character who are equipped to serve God, nation, community and school.



VISION – OUR GOAL

A Flourishing Community of
Self-Directed Learners,
Influential Leaders and Caring Citizens



VALUES – OUR HEART

PURITY & HONESTY

A Fairisian honours God by keeping his/her thoughts, speech & actions pure & honest.

UNITY

A Fairisian builds quality relationships by being kind, inclusive & committed.

RESILIENCE

A Fairisian adapts to changes & overcomes challenges.

EXCELLENCE

A Fairisian strives to reach his/her fullest potential.



STRONG AND COURAGEOUS



Oh! It's Fairfield

SCHOOL LEADERS



**Principal
Mr Wee Tat Chuen**



**Vice-Principal
Mr Jeromy Ngian**



**Vice-Principal
Ms Stella Koh**



**Vice-Principal
Ms Anna Cai**



**Vice-Principal (Admin)
Mdm Veronica Chua**



EXECUTIVE COMMITTEE



Oh! It's Fairfield

YEAR HEADS



Lower Secondary
Mr Eric Loh



Upper Secondary
Mr Yap Hock Heng



ASSISTANT YEAR HEADS



Lower Secondary
Ms Trixie Chan



Upper Secondary
Ms Lee Xin Er



WEEKLY ROUTINES

	Mon	Tues	Wed	Thur	Fri
All	Aim to be in school by 7.20am for Silent Reading, Late if you are not through the gate before 7.28am				
Assembly	Assembly on the parade square (School Song)	Assembly on the parade square	US: Chapel Service LS: FC/CC	US: FC/CC LS: Chapel Service	Assembly on the parade square
Enrichments/ Remedials/ Consultations		3.15pm – 4.30pm		2.30 – 3.30pm	12.30 – 1.30pm
	Consultations	Enrichment Days / White Space Days	Consultations	Remedials / Consultations	Remedials / Consultations
	Full Uniform/ Polo T Half U when it is a non-PE day Half U w PE T-shirt allowed on a PE day				Dress down in Half U: School Polo T, PE T- Shirt and Official CCA Polo / T-shirts allowed.
Attire			Full U with Tie for US (Half U after PE lesson, if applicable)	Full U with Tie for LS	
All Students	CCAs (3pm - 6pm, school closes by 6.30pm)		CCAs (3pm - 6pm, school closes by 6.30pm)	2 nd CCA Day	CCAs (2pm onwards, school closes by 6.30pm)

LEARNING FESTIVAL, ENRICHMENTS & FLEX

	Term 1 (Week 10)	Term 2 (Week 9)	Selected Tuesdays
Domains	Learning Festival (T-T) and Sports Day (F)	FLEX Week (Wed – Fri)	Enrichments
Sec 1	Humanities Investigation Code for Fun	Outdoor Adventure Camp	Digital Literacy Code for Fun Higher Chinese Language Student Leadership
Sec 2	Visit to Singapore Discovery Centre Museum Visit Humanities Investigation AI for Fun	Diff-Abilities Day Family Quest	AI for Fun Stretched Programmes for Science, Higher Chinese Language and D&T Student Leadership
Sec 3	Education Career and Guidance talks Financial Literacy Science Learning Journeys	FLEX Challenge	FLEX Challenge Training Student Leadership
Sec 4/5	Education Career and Guidance talks Polytechnic Learning Journeys ECG Day – Job shadowing and Industry Visits	Master Classes and Sprint to the Finals	Student Leadership Stretched Programme for Science

SEC 3 FLEX Challenge

- Build upon Student Initiated Learning (No need for separate SIL)
- Help students grow in discovery of their passion & aspirations
- A platform to take steps to develop discipline & a can-do spirit
- Part of the memory making & nurturing the social skills



SEC 3 FLEX Challenge

1. TIE Taiwan
2. TIE Urban Heating
3. TIE Thailand
4. TIE Vietnam
5. TIE Model United Nations
6. Local Model United Nations
7. Art
8. Arcade game making
9. Cycling
10. Faith
11. Junior baker
12. MasterChef
13. Ultimate fitness



Sophia Blackmore Leadership Programme

The programme aims to develop **Influential Leaders anchored in values** and **skilled in the 4 Fairfield leadership practices.**





Modelling Purity and Honesty





Encouraging Hearts, Enabling *Unity*





Stewarding
Growth, Resilience
Strengthening





Inspiring peaks of Excellence

In all these things we are more than conquerors through Him who loved us.

Romans 8:37



Voice of a Fairisian Programme

The programme aims to develop in Fairisians **an influential voice that advocates Purity, Unity, Resilience and Excellence (PURE).**



Voice of a Fairisian Programme

Discovering an Empathetic Voice that Connects



Developing an Insightful Voice that demonstrates resilience



Unleashing a Creative Voice that Unites



Exemplifying a Personal voice that pursues excellence



Voice of a Fairisian Programme



Voice of a Fairisian Programme



A Collaboration between Fairfield Methodist School (Secondary) & Weiyu Films

WEIYU
FILMS



Internship Programme

28 OCTOBER TO 1 NOVEMBER 2024

Don't miss out on this incredible opportunity to work on a local television production that would be screened on Mediacorp, Channel 5, in 2026! Gain hands-on experience and invaluable skills from industry experts. Apply today!

Weiyu Films is one of Singapore's leading content creators and producers, specializing in scripted drama for television and web, as well as feature films. Their award-winning television and films have been distributed throughout Asia and in USA- on Netflix, Disney+ and Apple TV+. Some of these films are 128 Circle, This Land is Mine, Code of Law, Reunion, Rise, Derek or/and Bring Back the Dead.



APPLY AT [GO.GOV.SG/FMSS2024INTERNSHIP](https://go.gov.sg/fmss2024internship)

Registration closes on 10 September 2024



5-Day TIMETABLE (MAX 4 PER TERM)

	Mon	Tue	Wed	Thu	Fri
Wk 1					
Wk 2					HBL (Stf Mtgs)
Wk 3					
Wk 4				HBL (Stf Mtgs)	
Wk 5					
Wk 6			HBL (Stf Mtgs)		
Wk 7					
Wk 8		HBL (Stf Mtgs)			
Wk 9					
Wk 10	HBL (Stf Mtgs)				



Oh! It's Fairfield

TERM 1 EVENTS

Date	Events
2, 5 & 6 January	Start Right Programme for all levels
16, 29 January	Home-Based Learning Day
11 February	Home-Based Learning Day
16 February	Multi-Ethnic Celebration
20 February – 2 March	Weighted Assessment 1
3 March	School Emergency Exercise
9 March	Home-Based Learning Day
10 - 12 March	Learning Festival
13 March	Sports Day



PROGRESSION CRITERIA

(Sec 2s and Sec 3s) All students generally progress to next year of learning, guided by a common academic requirement that applies at the end of S2 and S3.

Academic requirement:

Pass (a) EL and 2 subjects *or* (b) at least half the total number of examinable subjects offered.

- **'Pass'** refers to subject overall mark of at least 50%, regardless of subject level.
- **'Half the number of total examinable subjects'** would be rounded down if the student offers an odd number of subjects, subject to a floor of 3.
- **'Examinable subjects'** do not include CCE, PE and lower secondary Music.



PROGRESSION CRITERIA

In general, all students progress to the next year of learning

- S2 students who do well in individual subjects can offer subjects at MDL at the end of S2 Sem 2. Students who obtain at least 75% in these subjects can be offered to do these subjects at MDL.
- This is a strict criteria school will be applying.
- Students can remain at year of learning if there are extenuating circumstances: long-term absenteeism, medical reasons, and student well-being.



PROGRESSION CRITERIA

In general, all students progress to the next year of learning

Students who do not meet the academic requirement

Students *are to* calibrate curricular load:

Schools will consider the following options (in any combination):

Reducing the no. of subjects (subject to minimum subject policy)

Offering elective subject(s) at LDL

Offering compulsory subject(s) at LDL if they obtained E8 or below at G3 or 6 at G2



Oh! It's Fairfield

Overview of Post-Secondary Pathways

Students taking at least	POST-SEC PATHWAYS					
	ITE Year 1 Entry	ITE Year 2 Entry	Polytechnic Foundation Programme (PFP)	Polytechnic Year 1	Millennia Institute	Junior College
5 G3 subjects	✓	✓	NEW ✓	✓	✓	NEW ✓
4 G3 + 1 G2 subjects	✓	✓	NEW ✓	NEW ✓		
5 G2 subjects	✓	✓	✓			
4 G1 subjects	✓	NEW* ✓				

*Students who offer 4 G1 subjects will join Year 1 of Higher Nitec, and may be offered the accelerated pathway if they meet academic requirements during their Year 1 Semester 1 examinations. This pathway will allow them to attain a Higher Nitec in a shorter duration of about two years.



ASSESSMENT STRUCTURE

	Term 1	Term 2	Term 3	Term 4
Sec 1s – 3s	WA1 – 15%	WA 2 – 15%	Timed Practices - NA	EOY – 70%
Sec 4s/ 5s	WA1 – 15%	WA 2 – 15%	Prelims – 70%	National Exams

- Need for consistent homework, clarification and engagement
- Importance of remediation, consultation and intervention





Use of PLD for Teaching and Learning



PLD: Intended Outcomes of Initiative

The use of the PLD for teaching and learning aims to:



Support the Development of Digital Literacy



Support Self-Directed and Collaborative Learning



Enhance Teaching and Learning

PLD: Parents' / Guardians' Role

Parents/guardians play a crucial role in guiding your child/ward to use devices responsibly and safely. We would like to partner parents/guardians so that students are well supported in their use of technology for learning.

As parents / guardians, you can help in the following ways:

- **Model good digital habits** for your child/ward e.g., parents/guardians not using devices during family meals.
- **Know your child/ward well and have conversations with your child/ward** about **safe and responsible use of technology**.
- **Discuss and come up with ground rules for internet/device usage** that both your child/ward and you can agree with.
- **Encourage your child/ward to use productivity tools on his/her PLD**, to organise information and simplify tasks for efficiency.



CO-CURRICULAR ACTIVITIES



CCA: LEAPS 2.0

*A Student-Centric,
Values-Driven Education*

A Broad and Deep Foundation for a Lifelong Journey

LEAPS 2.0

– 4 domains has levels of attainment: 1 - 5



Participation

Achievement

Leadership

Service



CCA: LEAPS 2.0

CCA Attainment	Basic Requirement for Level of Attainment in Domains	Bonus Points (for JC/Poly Admission)
Excellent	Student should have attained a <u>minimum Level 3 in all four domains with at least Level 4 in one domain.</u> (e.g. 4,3,3,3)	2
Good	Student should have attained a <u>minimum Level 1, in all four domains</u> with any one of the following: i. At least Level 2 in three domains (e.g. 2,2,2,1) ii. At least Level 2 in one domain and at least Level 3 in another domain (e.g. 2,3,1,1) or iii. At least Level 4 in one domain. (e.g. 4,1,1,1)	1
Fair	Did not meet above criteria	0

Refer to School Website for details.



STUDENT MANAGEMENT (SM)



Oh! It's Fairfield

SM: Discipline Team 2026

HOD: MR KELVIN TEO

LOWER SEC IC: MR ARIF

SEC 1: MS SANDY GOH

SEC 2: MR ANDREW CHOY

SEC 3: MS AMINAH

SEC 4/5: MS SAMANTHA TAY

LATE-COMING & DETENTION: MR SAM SEAH (GO)



SM: SCHOOL RULES

- Attendance
- Punctuality
- Mobile Devices





Attendance

- *All absence* must be covered by MC or parent letter (*inform FT*)
- Only *5 parent letters per semester*
- Absent without valid reason will be considered as *truancy (major offence)*

Punctuality

- 0725: Reading starts
- 0728-0759: late
After 0800: skipping lessons
(*same day community service*)

Mobile Devices

- Confiscation for *5 school days*
- SIM card will be returned to student



SM: CONSEQUENCES

- **Community Service** (1hr after school)
- **In-house Suspension** (lesson / CCA)
- **Community Service** (external, 10-50hr)
- **Barred from representing the school**
- **Caning** (for boys)
- **Home Suspension**
- **Conduct Grade** (fair or poor)
- **Suspension or Sacked** (student leaders)





STUDENT WELL-BEING (SW)



Guidance Team



Oh! It's Fairfield

SW: SPECIAL EDUCATIONAL NEEDS

SPECIAL EDUCATIONAL NEEDS OFFICERS (SENO)



Ms Jacelyn Pang
(ext 244)



Ms Noreffaliza
(ext 248)

You can find them
at LBS Room
(Level 4 Classroom Block)



SW: SCHOOL COUNSELLING

SCHOOL COUNSELLOR



Mr Larry Loh
(ext 188)



Ms Tan Xin Ru
(ext 200)

You can find them at **Guidance@Fairfield**
(Level 2 Clock Tower Block)



SW: SCHOOL COUNSELLING

Support available for parents of students with SEN/socio-emotional needs

- Termly sessions on Saturday mornings
- Can email Mr Glen Tan (HOD SEN) to participate





Home / Co-Curriculum / Student Well-being

Co-Curriculum

- Overview
- Sophia Blackmore Leadership Programme
- CCA
- Character & Citizenship Education
- Discipline
- Guidance
- Student Well-being**

- Overview
- Sophia Blackmore Leadership Programme
- CCA
- Character & Citizenship Education
- Discipline
- Guidance
- Student Well-being**

Student Well-being



A warm welcome to you.

Secondary school students will often face many challenges throughout their journey in this formative period of



SW: EDUCATION & CAREER GUIDANCE



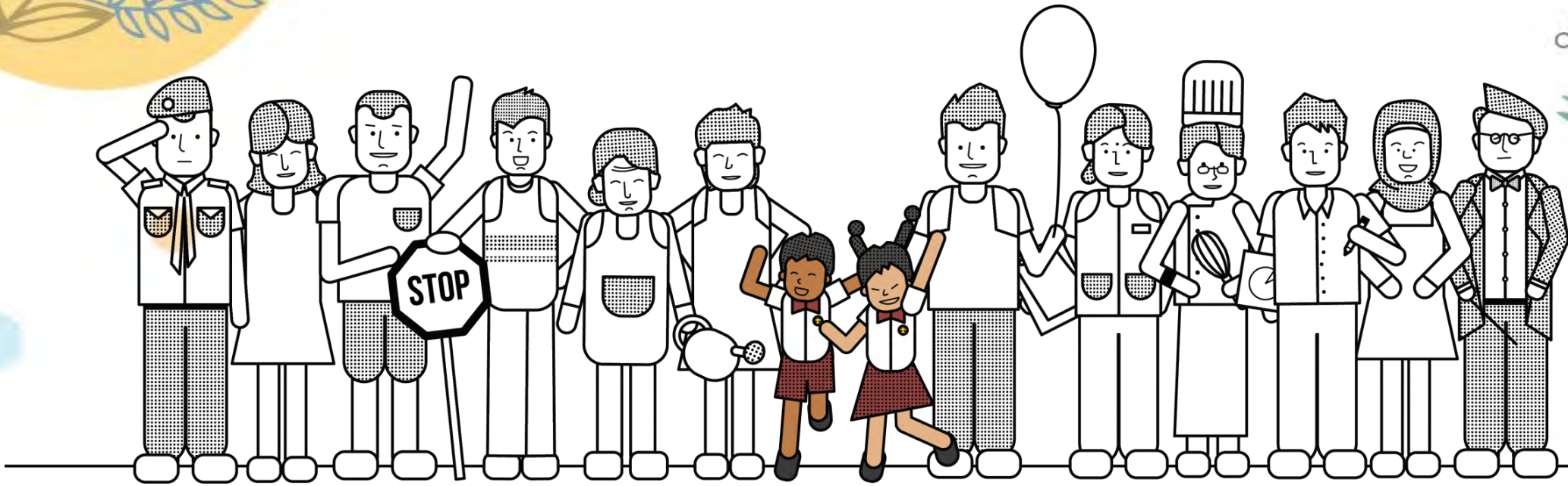
ECG Counsellor
Ms Belinda Teo

You can find her
at **Guidance@Fairfield**
(Level 2 Clock Tower)



Oh! It's Fairfield

BUILDING PARTNERSHIPS WITH PARENTS



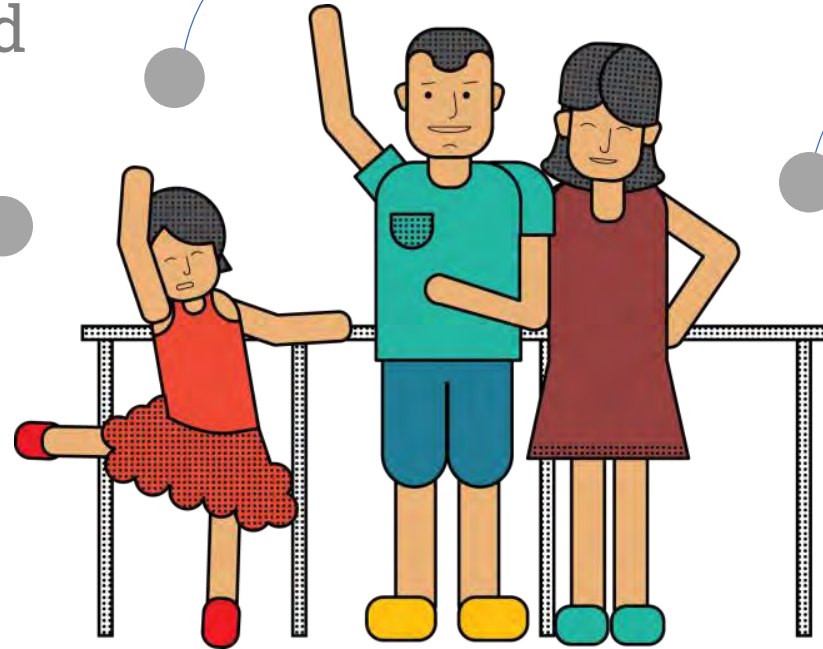
Oh! It's Fairfield

BUILDING PARTNERSHIPS WITH PARENTS

1 Knowing your child

2 Developing your child

3 Keeping in touch with the school



Oh! It's Fairfield

BUILDING PARTNERSHIPS WITH PARENTS

Respectful Communication

Foster kind words and actions between parents and educators



Role Models

Show our children the skills and values they need for life



Real Connections

Cultivate strong relationships and healthy habits in this digital age



BUILDING PARTNERSHIPS WITH PARENTS

KEEPING IN TOUCH WITH THE SCHOOL

Maintain regular communication through official school channels.

1. FMS(S) official official modes of communication with parents are:
 - Parents Gateway
 - School main tel line (General Office: Tel: 6778 8702)
 - School email (Email: fmss@moe.edu.sg)
 - Staff's official school email addresses (available on school website)
2. As teachers may be in class, do leave a message at the school's General Office if you are unable to contact them during school hours.
3. Teachers are not obliged to provide their personal mobile numbers to parents/students.
4. Contact teachers during school operating hours only, unless it is an emergency.
5. Working with the staff directly based on the context of concern.





PARENTING TALKS



Oh! It's Fairfield

PARENTING TALKS

- Parenting Talk 1 – 7 Feb 2026 (0900 to 1030)
(Raising Resilient Kids)
- Parenting Talk 2 – 7 March 2026 (0900 to 1030)
(Leadership and Communication)
- Parenting Talk 3 – 18 April 2026 (0900 to 1030)
(AI development skills for our teens)



Raising Resilient Kids

We live in an increasingly fast-paced and competitive society often described as a VUCA (Volatile, Uncertain, Complex, Ambiguous) world, where the pressure to succeed and perform can leave our children feeling panic-stricken and overwhelmed. How can we nurture our children's psychological resilience to better manage stress? Be empowered to emotionally coach your child towards a positive and healthy attitude for learning and living.

Leadership and Communication

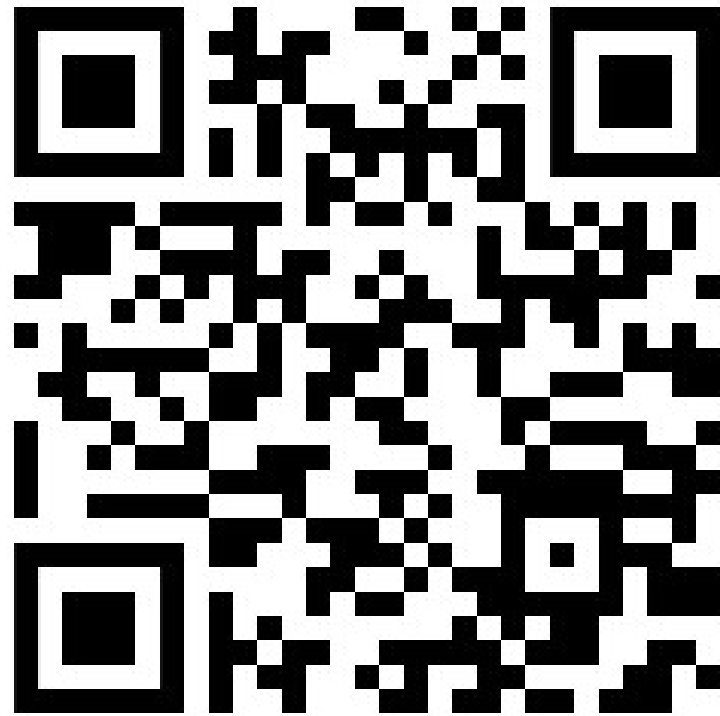
The Leadership & Communication Workshops empower parents to build stronger connections with their children by combining Maxwell Leadership Training and the Maxwell DISC Method to recognize unique strengths, understand behavioural cues, and adapt communication approaches. Through sessions such as From Family Stressed to Family Best, Discovering Our Strengths, and Supporting Your Child Through the Teenage Season, parents learn to identify giftedness, nurture personality traits, and guide teens through independence and identity development.

AI Development Skills for our Teens

Helping Our Teenagers Create Value workshop is a hands-on program designed for parents to experience growth mindset learning from a student's perspective using the C.A.R.E.™ methodology like Connect the dots, Ask better questions, Research and create ideas, and Evaluate solutions. Through interactive activities such as brainwriting, critical thinking, creative ideation, and solution evaluation, participants will practise essential skills like critical and creative thinking while exploring how to discern AI-generated content, identify learning gaps, and guide their teenagers in developing resilience, adaptability, and future-ready capabilities that enable them to create value in a world shaped by Generative AI.



Response for Parenting Talks 2026



Key areas of partnerships

- In support of education and career guidance
- In support of Parent Support Groups



Please scan the QR code or use the link to share how you would like to partner us!



FMSSpartnership2026

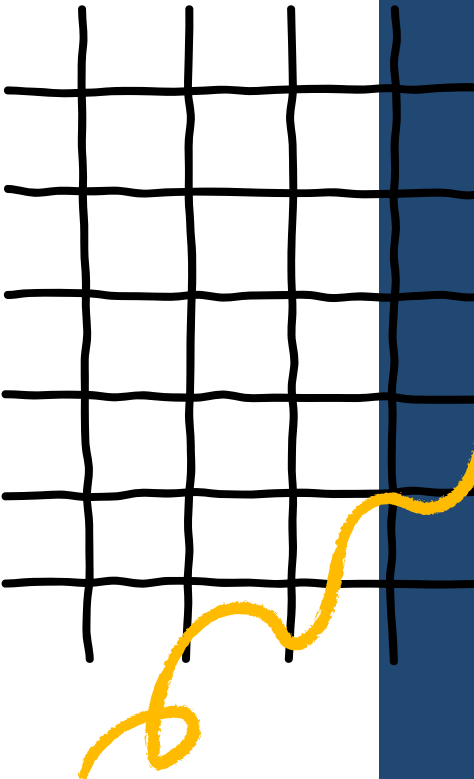




PiE Events 2026



Activities/Event	Date	Information
PiE Networking Session	24th Jan	Sec 1 and 2 PiE Parent's Session
Parents Workshops 1,2 & 3	7th Feb	Raising Resilient Kids by Focus on the Family
	7th March	Leadership & Communications by Carol Loi
	18th April	AI development skills for our teens
PiE Bonding Session	23rd May	Badminton (Parent and Child)
PiE Bonding Session	18th July	Craft workshop (Parent and Child)
PiE Networking Session	22nd Aug	Sec 1 and 2 PiE Parent's Session.
PiE Bonding Session	19th Sep	Futsal (Parent and Child)
PiE Bonding Session	16th Oct	Archery (Parent and Child)
PiE Appreciation Dinner	6th Nov	Appreciate PiE parents for their hard work.





Prayer Ministry Parents' Chatgroup

We gather every alternate Friday @ 0730hrs



Dads@Dover

(Last Sat of each Month)

- 28 Feb 2026 (2nd Session of the year)
- 745am – 9am@Sunshine@FMS(S)
- Worship, Devotional, Sharing and Prayer
- Breakfast fellowship



STRONG AND COURAGEOUS





THANK YOU



Oh! It's Fairfield